

# L5300

## Industrial Hand-held Wood Moisture Meter



Rugged, reliable, and built for demanding lumber operations, the L5300 delivers accurate moisture readings up to 1 inch deep. Its histogram display reveals moisture variation at a glance, while the optional L722 Stack Probe detects hidden moisture deep within stickered stacks.

Includes USB connectivity for advanced analysis with WoodStat Pro software.



Customizable Species Settings



Extensive Reading Capacity



On-Demand Calibration



Reduces lumber waste and improves sawmill efficiency

# L722

## Lumber Stack Probe



Leveraging Wagner's patented technology, the L722 Lumber Stack Probe delivers highly accurate moisture readings deep within stickered lumber stacks.

Unlike conventional methods, Wagner Meters measures the moisture in the wood, virtually unaffected by surface moisture, ensuring unparalleled reliability and precision.



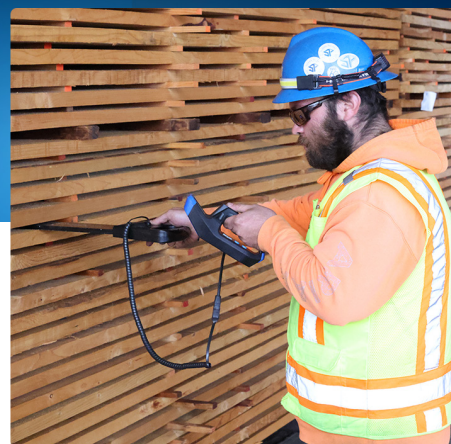
Designed for harsh industrial environments



Available in 40-inch or 26-inch lengths



Accurately measures moisture levels deep within lumber stacks



## L5300 Moisture Meter and L722 Stack Probe Combo

With a reading depth of 1 inch, the L5300 integrates seamlessly with the L722 Lumber Stack Probe, allowing users to detect moisture deep within stickered stacks, which is crucial for identifying inconsistencies that may affect product quality.

The meter stores up to 1,000 readings across 100 groups and includes a histogram mode to visualize moisture variation at a glance.

We all know that only taking moisture readings from the edges and outer boards of a kiln pack won't give you a good indication of how much moisture remains deeper inside. Before about 1995, there just wasn't a good method of dealing with this problem. But then Wagner's innovative design attitude changed the whole picture.

We introduced the first version of our moisture meter/stack probe combination that, for the first time, made it easy to take hundreds of measurements deep inside (where they need to be taken) kiln packages without having to split the pack with a forklift. Wagner has sold thousands of this combination over 20+ years, and many of you heavily depend on it as a part of drying quality control.

For those of you who aren't yet enjoying faster and easier moisture measurement for your kiln packs with our L622 and L722 combination, do what many of your peers have been doing for years and start using this valuable tool by contacting Wagner Meters today.

Thank you for being a Wagner customer, and when you need us, we are here.

Respectfully,

Kirk Metcalf  
Forest Products Business Development  
Specialist, Wagner Meters

Worldwide Toll-Free (800) 505-1409



**Call to Speak to an Application Specialist Today:**  
(800) 505-1409 (Worldwide Toll-Free)  
[WagnerMeters.com](http://WagnerMeters.com)

736-WL722-001-REV B